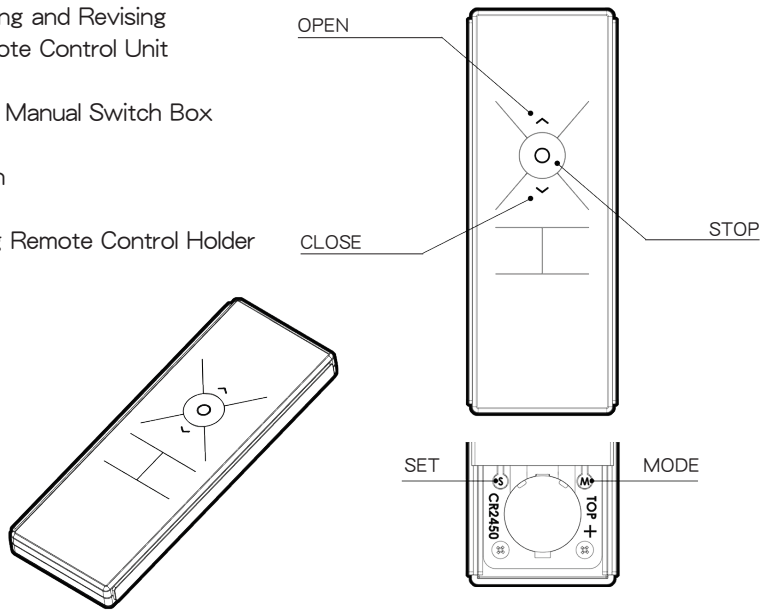


Motorized / Smart Drapes Belt Driven Instruction Manual

FULLLINK SMART TECHNOLOGY CO., LTD
No.62, Bengong 5th Rd., Gangshan Dist., Kaohsiung City 82059, Taiwan (R.O.C.)
Email: sales@smart-fulllink.com
This instruction manual version is v1.0.

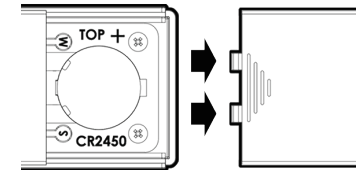
Table of Contents

- 1-1 Travel Distance Setting and Revising
- 2-1 Adding another Remote Control Unit
- 3-1 Clear off Password
- 4-1 Externally connected Manual Switch Box
- 5-1 Battery Replacement
- 5-2 Product Specification
- 5-3 Quick Setting Index
- 5-4 Instructions for using Remote Control Holder

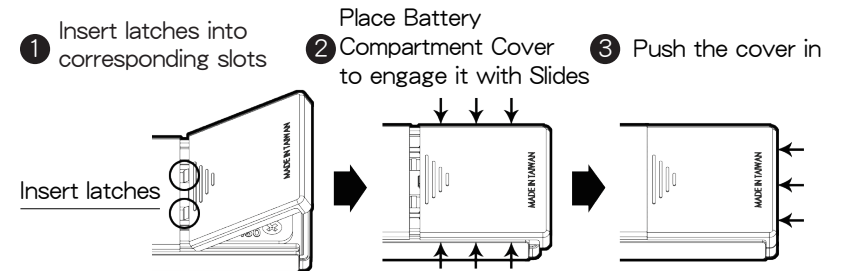


How to open Battery Compartment Cover

△ Push the cover out

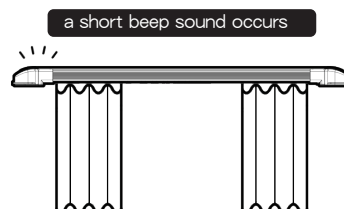
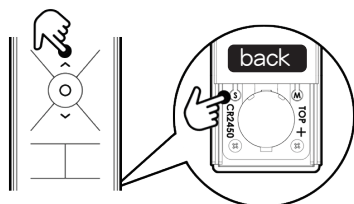


How to replace Battery Compartment Cover



1-1 Travel Distance Setting and Revising

STEP-1 Press [OPEN] + [SET] keys until a short beep sound occurs.



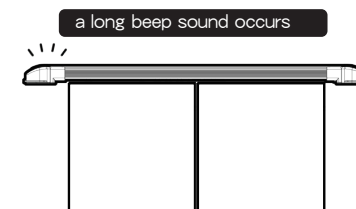
the Drape begins to set the travel distance automatically

steps:

the Drape opens completely

the Drape closes completely in 2 seconds

A long beep sound will occur, indicating that the travel distance setting is completed.

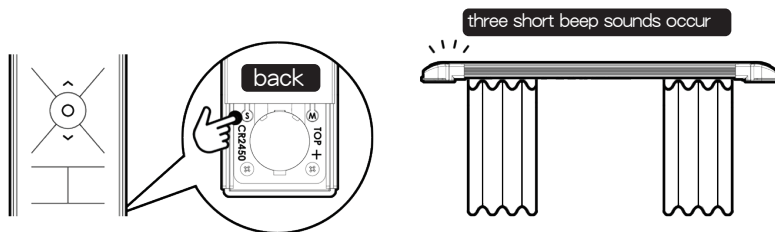


Setting Completed

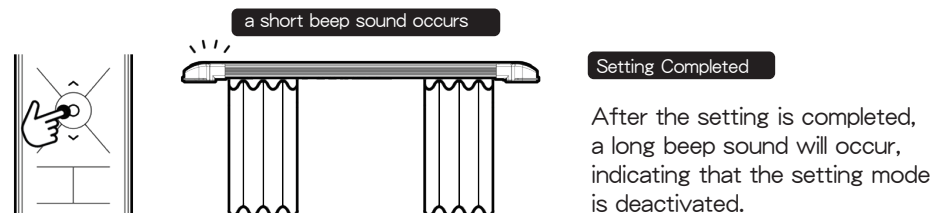
Please repeat step 1-1 if there is something wrong with the travel distance of the Drape.

2-1 Adding another Remote Control Unit

STEP-1 Press and hold [SET] until three short beep sounds occur, indicating that the setting mode of Adding another Remote Control Unit is activated.

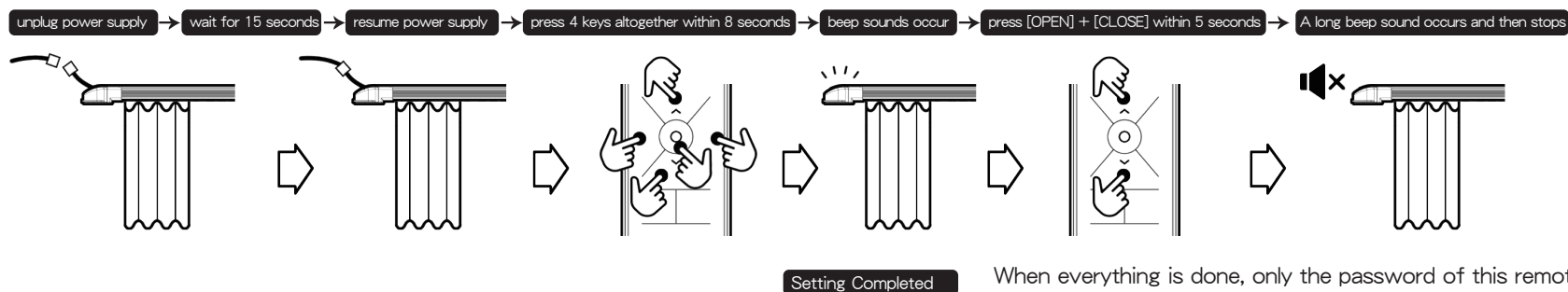


STEP-2 Now press [STOP] key of the Remote Control to be added; the adding process is completed when a short beep sound occurs.



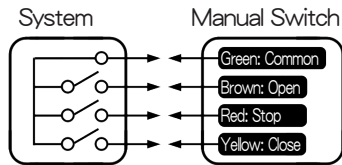
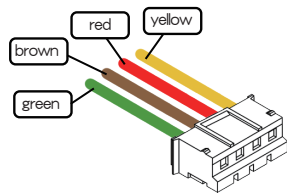
3-1 Clear off Password

STEP-1 Unplug power supply of the Motor, wait for 15 seconds, resume power supply of it. Within 8 seconds, press [OPEN] + [STOP] + [CLOSE] + any of blank keys [LEFT] OR [RIGHT] altogether 4 keys, beep sounds will occur immediately, then, within 5 seconds, press and hold [OPEN] + [CLOSE]. A long beep sound will then occur, indicating that the Password is cleared off.



When everything is done, only the password of this remote remains, others will be erased. If a new password is not added, the old password will not be erased.

4-1 Externally connected Manual Switch Box



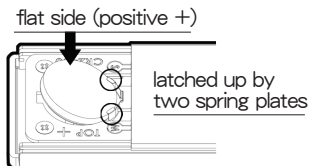
A brief contact will activate the function;
DO NOT short-circuit continuously.

Instructions

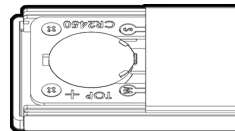
Green + Brown = open the Drape
Green + Yellow = close the Drape
Green + Red = stop the Drape

5-1 Battery Replacement

- 1 With flat side (positive +) of the Battery facing upwards, making sure that the Battery is latched up by two spring plates, insert Battery in a slanted angle to enter it into the



- 2 Completed.



5-2 Product Specifications

Battery: CR2450 3V (One-time type lithium battery)
Dimensions: L 13CM, W 4.8CM, H 1.1CM
Standby Current: <1uA
Modulation Method: OOK
Encoding Method: Internally-burnt fixed coding
Transmission Frequency: 433.92MHz
Antenna Type: on board, Gain=0 dbi
Weight (including battery): 66g

5-3 Quick Setting Index

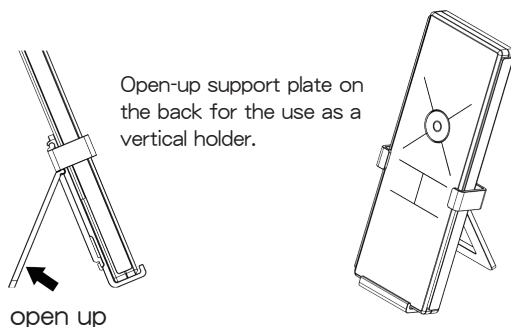
Travel Distance Setting and Revising: [OPEN] + [SET]

Add another Remote Control: [SET], (Remote Control 2) [Stop]

Clear off Password: [Open] + [Stop] + [Close] + any of [Left] or [Right] blank key, [Open] + [Close].

5-4 Instructions for using Remote Control Holder

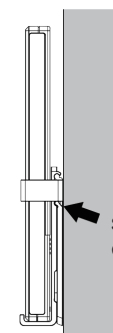
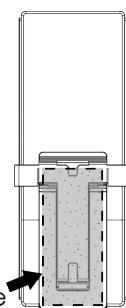
Vertical Holder



Wall-mount Holder

Apply the provided double-face adhesive tape on the back of Holder and stick it onto the desired position on the wall, as a wall-mounted holder.

Apply the adhesive tape



stick it onto the
desired position